

TYPICAL SECTION VIEW

**NOTES:**

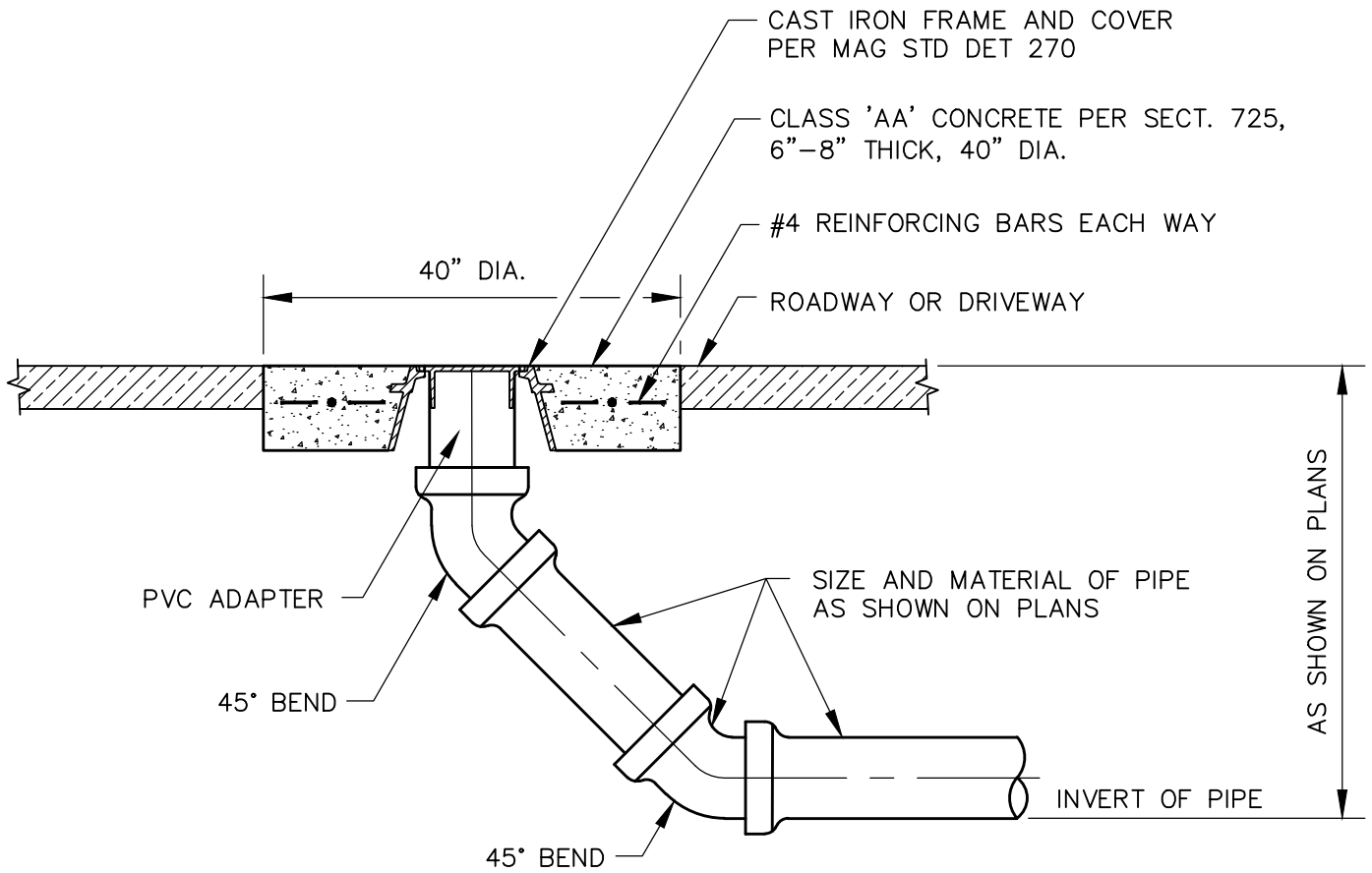
1. THIS SANITARY CLEAN OUT IS TO BE USED IN SODDED AREAS ONLY THAT ARE NOT ACCESSIBLE TO VEHICULAR TRAFFIC.
2. PLUG SHALL CONFORM TO THE SPECIFICATIONS AND SHALL HAVE A GASKET.

# FHSD STANDARD DETAILS

DETAIL NO.
<b>FHSD-1</b>
REVISED: JULY 2021

## SANITARY SEWER CLEAN OUT FOR NON TRAFFIC AREAS





TYPICAL SECTION VIEW

**NOTE:**

THIS SANITARY CLEAN OUT IS TO BE USED IN ALL TRAFFIC AREAS, INCLUDING THE PARKWAY FROM CURB TO PROPERTY LINE OR SIDEWALK.

# FHSD STANDARD DETAILS

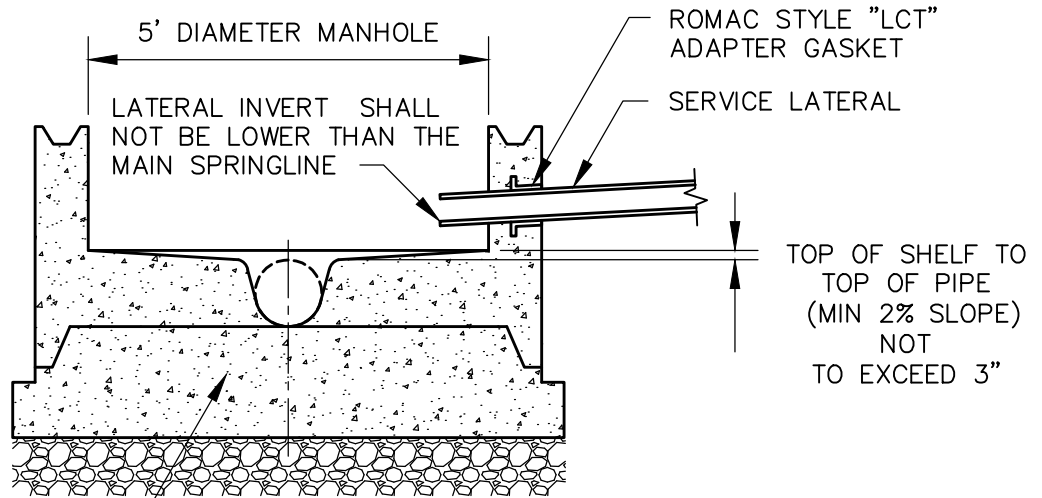
DETAIL NO.

**FHSD-2**

REVISED: JULY 2021

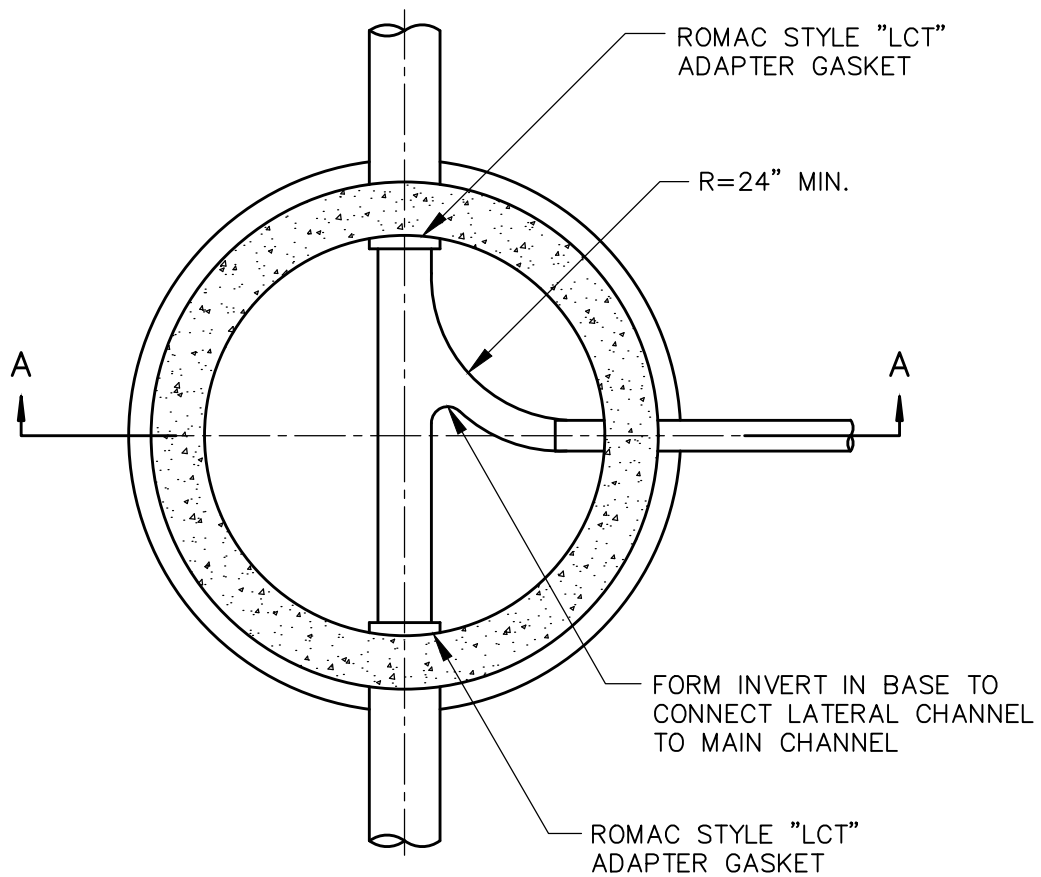
## SANITARY SEWER CLEAN OUT FOR TRAFFIC AREAS





CAST-IN-PLACE CLASS "A"  
CONCRETE BASE

**SECTION A-A**



**PLAN VIEW**

# FHSD STANDARD DETAILS

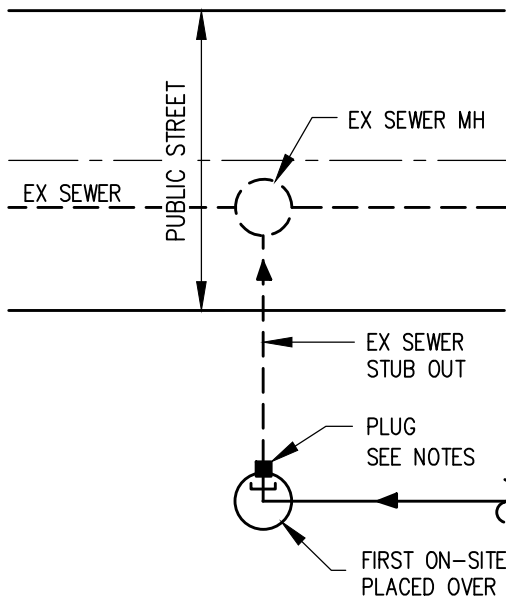
DETAIL NO.

**FHSD-3**

REVISED: JULY 2021

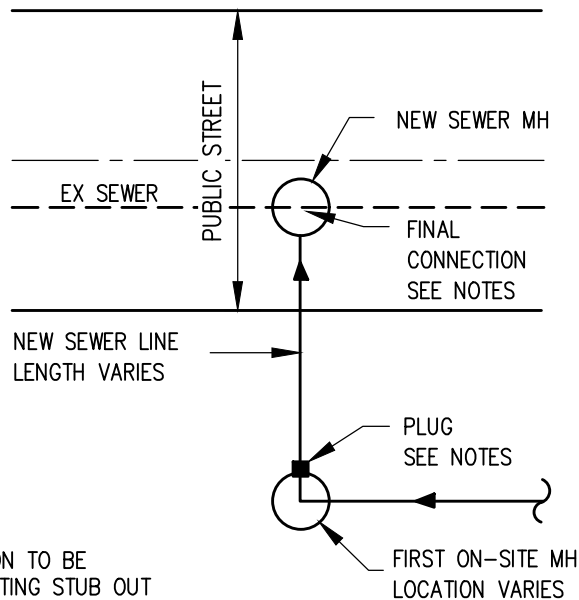
**SERVICE TAP TO MANHOLE**





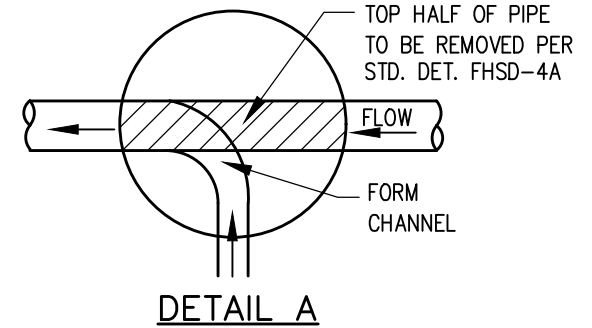
### STUB OUT (OR PHASED) CONNECTION

1. NEW SEWER AND STUB OUT LINE TO THE EXISTING MANHOLE SHALL BE VACTORED AFTER CONNECTIONS ARE COMPLETE AND PLUG SHALL BE IMMEDIATELY INSTALLED.
2. PLUG MAY ONLY BE REMOVED AFTER PASSING ALL REQUIRED TESTING (PRESSURE, MANDREL AND CCTV), AND WITH APPROVAL OF THE CITY INSPECTOR.
3. LINES SHALL BE VACTORED PRIOR TO REQUESTING CCTV INSPECTION, AND WITH FHSD INSPECTOR PRESENT, A SUFFICIENT VOLUME OF WATER SHALL BE ADDED TO THE SYSTEM FOR CCTV INSPECTION.
4. PLUG SHALL BE IMMEDIATELY REINSTALLED AFTER COMPLETION OF CCTV INSPECTION OR DAILY IF INSPECTION SPANS MULTIPLE DAYS.



### NEW MH (IN PUBLIC STREET) CONNECTION

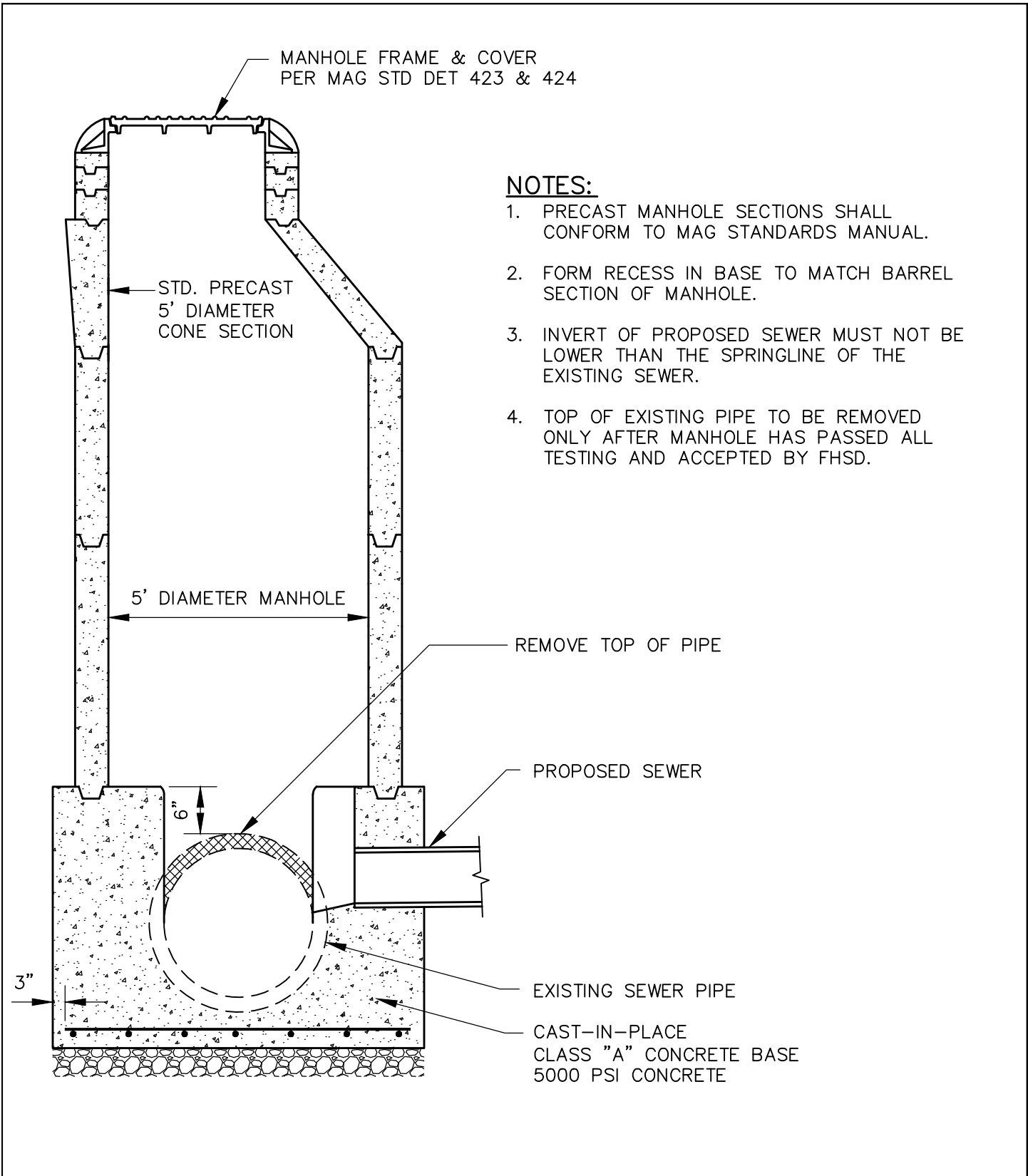
1. NEW SEWER LINE TO THE NEW MANHOLE SHALL BE VACTORED AFTER CONNECTIONS ARE COMPLETE AND PLUG SHALL BE IMMEDIATELY INSTALLED.
- < SAME NOTES (2-4) APPLY
5. FINAL CONNECTION IN NEW MANHOLE SHALL OCCUR NEAR PROJECT COMPLETION AND EXISTING SEWER LINE WITHIN MANHOLE REMAINS FULLY INTACT. WHEN ALL TESTING HAS BEEN COMPLETED AND ACCEPTED BY THE FHSD, TOP HALF OF PIPE IS REMOVED AND CHANNEL(S) ARE TO BE FORMED. SEE DETAIL A.



### GENERAL NOTES:

1. PLUGS SHALL BE INSTALLED AS SHOWN TO PROTECT FHSD SANITARY SYSTEM.
2. PLUGS SHALL REMAIN IN PLACE UNTIL ALL TESTING HAS BEEN COMPLETED AND ACCEPTED BY FHSD.
3. MECHANICAL OR PNEUMATIC PLUGS MAY BE USED AND INSTALLED TO ACHIEVE A WATER TIGHT SEAL.
4. CCTV TESTING SHALL BE IN ACCORDANCE WITH MAG SECTION 611 AND FHSD PROCESS.
5. ALL OTHER CONSTRUCTION AND TESTING TO BE IN ACCORDANCE WITH MAG AND FHSD SUPPLEMENTS.
6. THE CONTRACTOR SHALL UNCOVER ALL EXISTING FHSD UTILITY LINES BEING TIED INTO TO VERIFY THEIR TYPE, CONDITION, LOCATION, INVERT, SLOPE, AND ANY OTHER INFORMATION NEEDED TO DETERMINE THAT THE UTILITY CONNECTION WILL FUNCTION AS DESIGNED. THE CONTRACTOR IS RESPONSIBLE FOR MAKING ANY REPAIRS NECESSARY TO THE LATERAL OR MAIN LINES OF THE FHSD SYSTEM NECESSARY FOR THE CONNECTION TO FUNCTION AS DESIGNED. THE CONTRACTOR SHALL LOCATE OR HAVE LOCATED ALL EXISTING UNDERGROUND PRIVATE UTILITIES (ELECTRIC, TELEPHONE, PIPELINES, ETC) AND STRUCTURES IN ADVANCE OF CONSTRUCTION AND SHALL ELIMINATE ALL CONFLICTS PRIOR TO START OF CONSTRUCTION. BLUE STAKE TELEPHONE (602) 263-1100.

DETAIL NO. <b>FHSD-4</b>	<b>NEW SEWER CONNECTIONS</b>	<b>FHSD STANDARD DETAILS</b>	
REVISED: JULY 2021			



**NOTES:**

1. PRECAST MANHOLE SECTIONS SHALL CONFORM TO MAG STANDARDS MANUAL.
2. FORM RECESS IN BASE TO MATCH BARREL SECTION OF MANHOLE.
3. INVERT OF PROPOSED SEWER MUST NOT BE LOWER THAN THE SPRINGLINE OF THE EXISTING SEWER.
4. TOP OF EXISTING PIPE TO BE REMOVED ONLY AFTER MANHOLE HAS PASSED ALL TESTING AND ACCEPTED BY FHSD.

# FHSD STANDARD DETAILS

DETAIL NO.  
**FHSD-4A**  
 REVISED: JULY 2021

## CONSTRUCTION OF MANHOLE OVER EXISTING SEWER

